




**Earn BISSELL Rewards!**

Register your  
product today!  
See details on  
back page

 **OPTiclean®**  
MULTI CYCLONIC  
**pet**  
**USER'S GUIDE**  
30C7 SERIES

**OPTiclean®**  
MULTI CYCLONIC

- 2 Thank You
- 3 Safety Instructions
- 4 Product View
- 5-6 Assembly
- 6-9 Operations
- 10-15 Maintenance and Care
- 16-17 Troubleshooting
- 18 Replacement Parts
- 18 Accessories
- 19 Warranty
- 20 Product Registration
- 20 Consumer Services





## Thanks for buying a BISSELL OptiClean® Vacuum

We're glad you purchased a BISSELL OptiClean vacuum. Everything we know about floor care went into the design and construction of this complete, high-tech home cleaning system.

Your BISSELL OptiClean vacuum is well made, and we back it with a limited three year warranty. We also stand behind it with a knowledgeable, dedicated Consumer Services department, so, should you ever have a problem, you'll receive fast, considerate assistance.

My great-grandfather invented the floor sweeper in 1876. Today, BISSELL is a global leader in the design, manufacture, and service of high quality homecare products like your BISSELL vacuum.

Thanks again, from all of us at BISSELL.

Mark J. Bissell  
Chairman, President & CEO

# IMPORTANT SAFETY INSTRUCTIONS

When using an electrical appliance, basic precautions should be observed, including the following:

## READ ALL INSTRUCTIONS BEFORE USING YOUR UPRIGHT VACUUM.

Always connect to a polarized outlet (left slot is wider than right). Unplug from outlet when not in use and before conducting maintenance.

### **WARNING: To reduce the risk of fire, electric shock, or injury:**

- Do not modify the polarized plug to fit a non-polarized outlet or extension cord.
- Do not leave vacuum cleaner unattended when it is plugged in.
- Unplug from outlet when not in use and before servicing.
- Do not use outdoors or on wet surfaces.
- Do not allow children to operate vacuum cleaner or use as a toy.
- Close attention is necessary when used by or near children.
- Do not use for any purpose other than described in this user's guide.
- Use only manufacturer's recommended attachments.
- Do not use with damaged cord or plug.
- If appliance is not working as it should, has been dropped, damaged, left outdoors, or dropped into water, have it repaired at an authorized service center.
- Do not pull or carry by cord, use cord as a handle, close a door on cord, or pull cord around sharp edges or corners. Do not run appliance over cord. Keep cord away from heated surfaces.
- Do not unplug by pulling on cord. To unplug, grasp the plug, not the cord.
- Do not handle vacuum cleaner or plug with wet hands.
- Do not put any object into openings. Do not use with any opening blocked; keep openings free of dust, lint, hair, and anything that may reduce air flow.

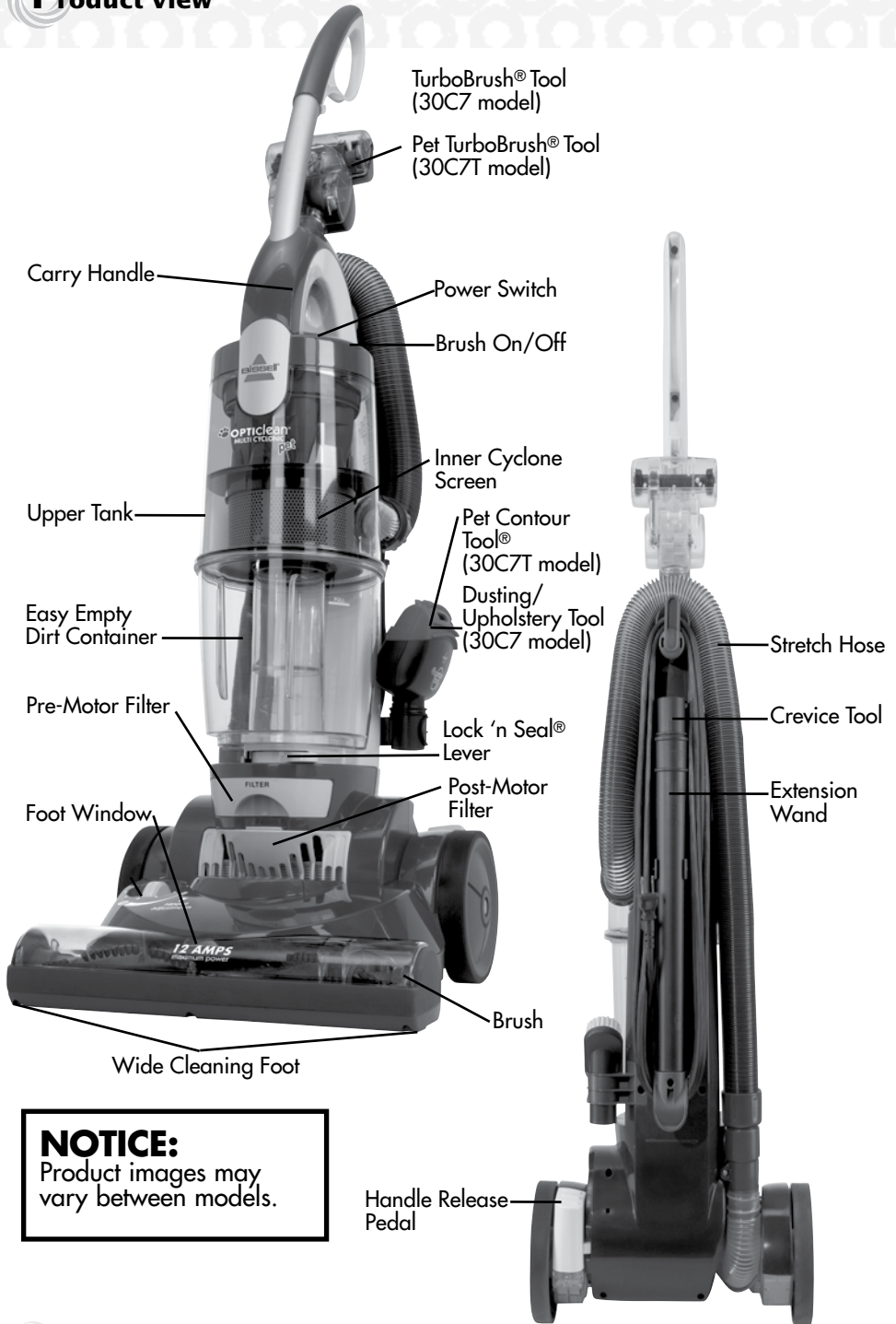
- Keep hair, loose clothing, fingers, and all parts of body away from openings and moving parts.
- Turn off all controls before plugging or unplugging vacuum cleaner.
- Use extra care when cleaning stairs.
- Unplug before attaching the TurboBrush® Tool
- Do not pick up flammable materials (lighter fluid, gasoline, kerosene, etc.) or use in the presence of explosive liquids or vapors.
- Do not pick up toxic material (chlorine bleach, ammonia, drain cleaner, etc.).
- Do not use vacuum cleaner in an enclosed space filled with vapors given off by oil base paint, paint thinner, some moth proofing substances, flammable dust, or other explosive or toxic vapors.
- Do not pick up hard or sharp objects such as glass, nails, screws, coins, etc.
- Do not pick up anything that is burning or smoking, such as cigarettes, matches, or hot ashes.
- Do not use without filters in place.
- Use only on dry, indoor surfaces.
- Keep appliance on a level surface.
- Do not carry the vacuum cleaner while it is running.
- Brush may unexpectedly restart. Unplug from outlet when cleaning or servicing

## SAVE THESE INSTRUCTIONS FOR FUTURE USE

## THIS APPLIANCE HAS A POLARIZED PLUG.

To reduce the risk of electric shock, this appliance has a polarized plug (one blade is wider than the other). This plug will fit in a polarized outlet only one way. If the plug does not fit fully in the outlet, reverse the plug. If it still does not fit, contact a qualified electrician to install a proper outlet. Do not change the plug in any way.

# Product view



**NOTICE:**  
Product images may vary between models.

# Assembly

**The only tool you'll need to assemble your vacuum cleaner is a Phillips head screwdriver.**

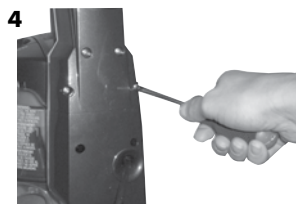
## **Attach handle to vacuum**

1. Locate the bag that contains the extension wand support, lower cord wrap, and screws. Remove the screw packet from the bag.
2. Stand the vacuum upright and from the rear of the unit, slide the base of the handle firmly into the grooves at the top of the vacuum body.
3. Ensure that the handle is firmly attached to the vacuum body. The front of the handle should be flush with the front of the vacuum body. If there are any gaps, continue to push the handle until it is secure.
4. Remove two of the four screws from the screw packet. Insert one screw, into each of the existing holes in the handle. With a screwdriver, tighten each screw completely.



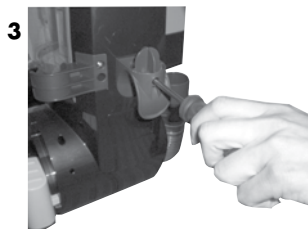
### **Caution:**

Do not plug in your vacuum cleaner until you are familiar with all instructions and operating procedures.



## **Attach storage clips, tool, and vacuum hose**

1. Locate the bag that contains the extension wand support, lower cord wrap, and remaining two screws.
2. Attach the extension wand support to the rear of the unit. Extension wand support should be placed about half way down the vacuum body. Using one of the two remaining screws, insert one screw into the existing hole. With a screwdriver, tighten screw completely.
3. Attach the lower cord wrap to the rear of the unit. Lower cord wrap should be placed toward the bottom of the vacuum body. Using the last screw, insert screw into the existing hole. With a screwdriver, tighten completely.
- 4a. Attach Twist 'n Snap™ hose by placing the tabbed end of the hose into the opening of the unit, located on the left side of the vacuum (when viewing from the back). Turn the hose to the right to lock into place.
- 4b. Place the attachment end of the hose into the hole on the right side of the unit, near the wheel.

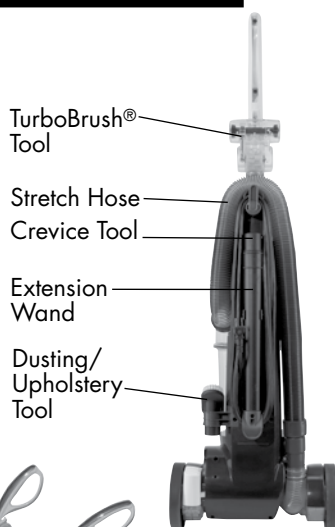


**NOTE: The vacuum will not operate effectively unless the hose is firmly attached.**

## Assembly

### Attach storage clips, tool, and vacuum hose continued

5. Make sure that crevice tool is inside the extension wand. Store the extension wand and crevice tool on the back of the unit. Place tools on the extension wand support and push toward the back of the unit until clip holds tools in place.
6. Slide the dusting brush into the storage clip on the left side of the unit (when viewing from back.)
7. Place the TurboBrush Tool in the hole marked "tool" on the top of the handle arch.



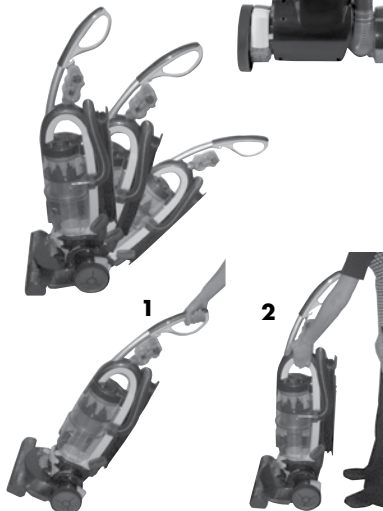
## Operations

### Handle Positions

Using your foot, press the handle release pedal, located on the lower left side of the vacuum, to recline the vacuum.

### Transporting your cleaner

1. To move your cleaner from room to room, put the handle in the upright position, tilt the cleaner back on its rear wheels and push forward.
2. The cleaner can also be moved by using the carry handle on the front.



### Power Cord

To store power cord, wrap cord around the upper cord wrap and lower extension wand support. Once wound tightly use the clip on the end of the plug to attach the plug to the cord.

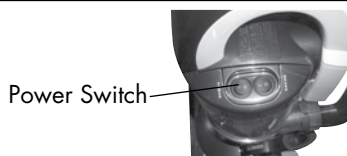
To release the power cord, rotate the upper cord wrap down and gently pull the power cord off of the upper cord wrap.

### Power switch

The power button is located on the left side (when viewing from back) of the vacuum. Push the rocker switch "ON" (I) to vacuum, and "OFF" (O) when cleaning is complete.

**Note:** The rotating brush will not turn on unless the unit is in the reclined position and the brush switch is on.

**Caution:**  
Before using your vacuum, Make sure both filters (pre-motor and post-motor) are in place. Do not operate your vacuum without these filters.



# Operations

## **Brush Switch**

The rotating brush is turned on or off using the switch located next to the power switch on the top of the tank. When the brush switch is on, the brush will start rotating when the unit is reclined. The brush should be on for most carpeted floors. You may want to turn the brush off for bare floor cleaning or other delicate surfaces.

Push the rocker switch "ON" (I) to turn the brush on, and "OFF" (O) to turn brush off.

## **Brush Auto Shut Off Feature**

When your cleaner is in the upright position, the brush will not rotate. The brush will rotate only when the cleaner is in the reclined position and the brush switch is on.

## **Height Adjustments**

There are seven height settings available for various floor surfaces. Turn the dial on the foot of the cleaner to the desired setting.

**Lowest setting** – for low pile carpet or bare floors. To pick up debris it may be necessary to move up one setting.

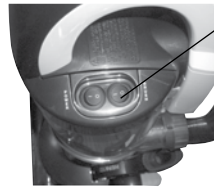
**Medium settings** – for medium pile carpet.

**High setting** – for high pile and most shag/frieze carpet.

**Note: For optimal carpet cleaning performance, adjust to the lowest practical setting. If your cleaner is difficult to push, adjust to the next higher setting.**

If the dial is difficult to turn, tilt the cleaner back slightly to take the weight off of the foot while turning.

Some Berber carpets have a tendency to fuzz with wear. Repeated strokes in the same area may aggravate this condition. Consider setting your cleaner on a higher than normal setting for this type of carpet.

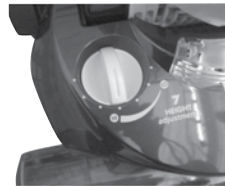


Brush Switch

## **Attention:**

Some Frieze carpets have long delicate fibers or threads that may be damaged by the rotating brush during vacuuming. It is recommended the rotating brush be turned OFF when cleaning this type of carpet.

While vacuuming, certain carpets and low humidity conditions may generate small static discharges. The discharges are entirely harmless and are not associated in any way with the main power supply.





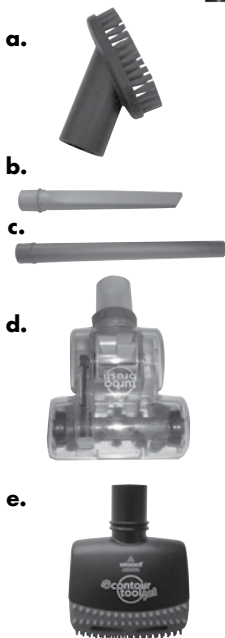
## Using the tools

**Attach desired tool to hose for above floor cleaning surfaces or hard to reach areas.**

1. Remove Hose: With vacuum in upright position, remove hose end from the suction inlet near the bottom of the vacuum by the wheel. Do not remove "tabbed" end of hose connected to the clear tank.
2. Attach tools by firmly pushing onto vacuum hose or extension wand.
  - 2a. Dusting brush: Use brush side to dust furniture, blinds, lamps, shelves, and baseboards. 30C7 model only.
  - 2b. Crevice Tool: Use in tight narrow spaces
  - 2c. Extension Wand: Use with desired attachment for longer reach.
  - 2d. TurboBrush® Tool: Use rotation brush action for small flat areas such as stairs, and furniture. Press gently down and pull towards you in raking motion, too much pressure will cause brush to stop rotating.

**NOTE: Model 30C7T comes with the Pet TurboBrush® Tool and follows same operation instructions.**

- 2e. Pet Contour Tool® (Included with 30C7T only): Use to reach into corners and edges on stairs as well as armrests and other curved surfaces. The tool can be flipped to use in any direction.



### CAUTION:

To avoid personal injury and to prevent the cleaner from falling when cleaning stairs, always place it at the bottom of the stairs.



## Empty dirty container

**Empty the dirt container as soon as the dirt reaches the “full” line on the side of the container.**

1. Unplug the vacuum from electrical outlet.
2. Slide the Lock 'n Seal Lever to the “Unlock” position.
3. Grasp the handle and pull the dirt container straight out to remove from the vacuum.
4. Empty dirt into garbage container.

**NOTE: Emptying the dirt container after every use will help prevent over filling and ensure that the vacuum is ready to go the next time you clean.**



## Cleaning the dirt container

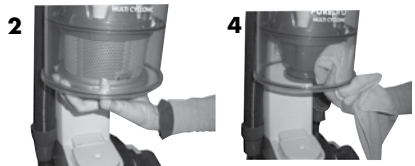
**Additional steps can be taken to clean the dirt container as necessary.**

1. Ensure dirt container has been emptied.
2. While the dirt container is still out of the unit, grasp the inner cyclone screen and twist counterclockwise until the locking tabs stop the rotation. Pull down the inner cyclone screen to remove it.
3. Clean the inner cyclone with a cloth or soft brush to remove dust or debris.
4. Wipe out the inside of the upper tank and the inner cyclone with a damp cloth moistened with water or a mild cleaning solution. Let completely dry before next use.
5. If desired, the lower dirt container may be washed in warm water. Make sure it is completely dry before reassembling.  
**Do not put in the dishwasher.**
6. To reassemble, replace the inner cyclone screen by sliding it into the upper tank and rotating clockwise until the locking tabs stop the rotation. The inner cyclone screen is labeled front and back. When properly assembled the front graphic should face out.



### **WARNING:**

To reduce the risk of electric shock, turn power switch OFF and disconnect polarized plug from electrical outlet before performing maintenance or troubleshooting checks.



## Maintenance and care

### Cleaning the pre-motor filter

**The pre-motor filter should be checked often and washed as needed to maintain performance. More or less frequent cleaning may be required based on individual vacuuming habits and types of debris picked up.**

1. Unplug the vacuum from electrical outlet.
2. The pre-motor filter protects the motor from dirt particles. It is located in the slide out tray underneath the dirt container. If the filter becomes dirty, pull out the tray, lift out the foam filter pad and clean it.

**Note: The pre-motor filter may be hand washed in cold water with mild detergent. Rinse well and air dry thoroughly before replacing.**



### **WARNING:**

Do not operate cleaner with damp or wet filters or without all filters in place.



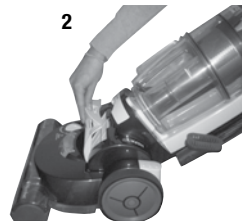
### Replacing the post-motor filter cartridge

**The post-motor filter assists in the filtration process to return clean air to the room. It is located under the pre-motor filter tray. Unit must be reclined to locate the post-motor filter.**

**The post-motor filter cartridge should be replaced if machine performance is noticeably declining. More or less frequent replacing may be required based on individual vacuuming habits and types of debris picked up.**

1. Recline the vacuum.
2. While holding the handle at a 60° angle, push the button on the top of the post-motor filter door to unlatch. Remove the door. Post motor filter door is located directly below the pre-motor filter drawer.
3. If the filter is dirty, remove it and replace with a new filter.
4. Replace the post-motor filter door.

**Note: The post-motor filter is a white, pleated filter. This filter is not washable and must be replaced when it becomes dirty.**



# Maintenance and care

## Clearing Clogs

**Low suction or poor pickup may be due to a clog in the vacuum cleaner. If you notice a change in the sound of the motor or a reduction in the spinning action in the dirt container, check for a clog.**

**If there is no suction or if suction is reduced at the hose, follow these steps to check for and clear the clog.**

1. Turn power switch off.
2. Unplug cleaner from electrical outlet.
3. Check the pre-motor filter and clean as necessary (see cleaning your pre-motor filter on page 10).
4. Check the post motor filter cartridge and replace if necessary (see replacing your post-motor filter on page 10). Check to see if dirt container is full. Empty if needed.
5. Check upper tank for build up or clogs. If you notice a clog in the upper tank, remove the inner cyclone (see cleaning the dirt container on page 9).
6. Grasp the hose wand and separate it from the hose wand base. Check for a clog in the base, the wand, or in the hose.
7. Remove the Twist 'n Snap hose from the vacuum by turning to the left. Straighten the hose and unclog with a long, narrow object such as a broom handle.
8. If the clog persists, follow the instructions for checking the rotating floor brush and drive belt on page 13 and inspect the air passageway for obstructions

**If suction is normal in the hose, check for and clear the clog for floor cleaning:**

1. Check the foot hose for clogs.
2. If you are not able to tell from the outside if a clog is present, remove the screw at the top left of the foot hose. Lay the foot hose flat and unclog with a long, narrow object such as a broom handle.

**Remove any clogs found and fully reassemble the cleaner before attempting to check suction again or using the cleaner.**



### **CAUTION:**

To reduce the risk of injury from moving parts, turn off vacuum cleaner and disconnect power plug from electrical outlet.

# Maintenance and care

## **Thermal motor protection**

**An internal thermal protector has been designed into your cleaner to protect it from overheating. When the thermal protector activates, the main vacuum motor will stop operating. If this happens, proceed as follows.**

1. Turn the cleaner OFF and unplug from electrical outlet.
2. Check the cleaner for the source of overheating problem (i.e. full dirt cup, dirty filters or clog).
3. Follow the steps for checking filters and clearing clogs on pages 10 and 11.
4. When the motor cools for approximately 30 minutes, the thermal protector automatically resets and cleaning may continue. If the cleaner will not turn on or the thermal protector continues to activate, your cleaner may need servicing. Call BISSELL Consumer Services or visit the website to locate an authorized Service Center.

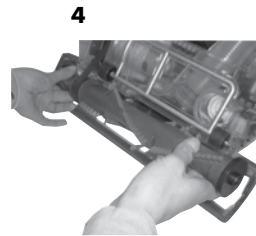
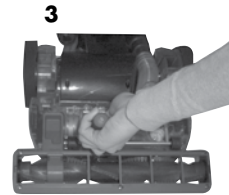
**Note: The thermal protector controls the main vacuum motor only, not the brush motor. If the thermal protector activates, the brush will continue to operate normally; however, there will be no suction.**

# Maintenance and care

## **Check rotating floor brush and drive belt**

**You should check your vacuum cleaner's rotating floor brush and drive belt regularly for wear and damage. You should also clean the brush and brush ends of strings, hair, and carpet fibers. This type of debris can wrap around the brush and hamper its ability to effectively clean your carpet. Also remove any debris that has accumulated under the brush cover.**

1. Unplug the vacuum from electrical outlet.
2. Place handle in low position and turn vacuum cleaner over so bottom side is facing up.
3. Remove the six screws on the sole plate with a Phillips head screwdriver. Lift the brush cover off.
4. Grasp rotating floor brush at both ends and lift.
5. Clean string, hair, and other debris from rotating floor brush, paying particular attention to brush ends.
6. Check air passageway for obstructions. Remove any debris from this area.
7. Clean debris from the motor pulley and drive belt areas.
8. Check drive belt carefully for wear, cuts, or stressed areas. If any damage is present, discard old drive belt and replace, see page 14.



# Maintenance and care

## Replace drive belt

1. Unplug the vacuum from electrical outlet.
2. With rotating floor brush removed from vacuum cleaner (steps 1 – 4 of check rotating floor brush and drive belt page 13), grasp old drive belt and remove from motor pulley. Discard the old drive belt.
3. Place one end of the new drive belt over motor pulley and the other end over the brush in the space between the bristles.

**Note: It is important that you use only genuine BISSELL replacement parts. Generic belts may not meet the exact specifications required to keep your vacuum operating at its peak performance. The use of unbranded belts could lead to early failure of the vacuum and could void your warranty.**

4. Pull the brush firmly to stretch the drive belt and place ends of brush down into slots on sides. Turn brush several times by hand to center the drive belt.
5. Reposition brush cover and screws. Tighten screws securely.

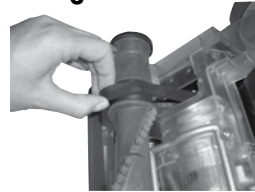
## Brush reset

**If something becomes lodged in the foot and the brush shuts off, turn the cleaner off and unplug from the outlet. Remove the obstruction. The brush will automatically reset when the cleaner is plugged in and turned back on.**

2



3



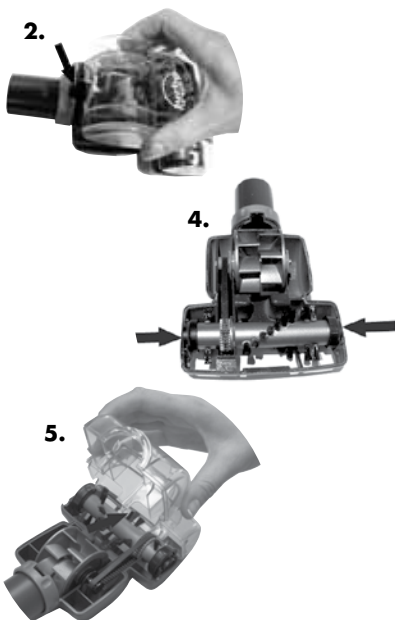
# Maintenance and care

## **TurboBrush Tool maintenance**

**The TurboBrush Tool should be checked regularly for clogs or debris wrapping around the brush.**

**Note: Model 30C7T comes with the Pet TurboBrush Tool and follows same maintenance instructions.**

1. Remove tool from hose or from vacuum.
2. Twist collar so opening is at the top and lift top cover to remove.
3. Remove the brush from the belt and clean debris.
4. Replace the brush inside the belt and place ends into slots on sides.
5. Reposition top cover making sure to line up inside tab at the front with the opening on the cover. Twist collar until opening is at the bottom to lock into place.



### *Tip:*

TurboBrush® may not be turning due to loss of suction. Refer to pg. 11 for checking and cleaning clogs.



# Troubleshooting

## Vacuum cleaner won't turn on

### Possible causes

1. Power cord not plugged in
2. Blown fuse/tripped breaker in home
3. Damaged power cord
4. Thermal protector activated

## Vacuum cleaner and tools won't pick up dirt

### Possible causes

1. Incorrect height adjustment
2. Hose not attached to suction opening
3. Twist 'n Snap hose not securely attached
4. Crack or hole in hose
5. Broken or worn drive belt
6. Rotating floor brush bristles worn
7. Rotating floor brush jammed
8. Clog in vacuum
9. Dirt container full
10. Dirt container not installed properly
11. Filters are dirty
12. TurboBrush® Tool is clogged or debris is wrapped

## Brush not rotating

### Possible causes

1. Brush switch turned to "Off"
2. Vacuum is in upright position
3. Brush is jammed
4. Brush needs to be reset



## WARNING:

To reduce the risk of electric shock, turn power OFF and disconnect polarized plug from electrical outlet before performing maintenance or troubleshooting.

1. Check electrical plug
2. Check/replace fuse or reset breaker
3. Unplug, check for damage, have cord replaced at an authorized service center if necessary
4. Allow cleaner to cool for 30 minutes, see page 12

### Remedies

1. Adjust powerfoot to correct height
2. Firmly push hose wand into hose wand base
3. Make sure Twist 'n Snap hose is snapped into locked position
4. Check hose and replace if needed
5. Replace drive belt, see page 14
6. Replace brush, see page 13
7. Remove brush and clean debris from brush ends
8. Clear clogs, see page 11
9. Empty dirt container
10. Position correctly and lock in place
11. Check pre-motor and post-motor filters, see page 10
12. See page 15 for Maintaining TurboBrush® Tool

### Remedies

1. Make sure brush switch is in "On" position
2. Recline vacuum to operate brush
3. Remove obstruction or debris, see page 13, unplug cleaner to reset brush, see page 13
4. Unplug cleaner to reset brush, see page 14

# Troubleshooting

## Vacuum cleaner is difficult to push

### Possible causes

1. Incorrect height setting

## Visible dirt escaping from cleaner

### Possible causes

1. Dirt container full
2. Filters missing or installed incorrectly
3. Dirt container installed incorrectly

**Other maintenance or service not included in the manual should be performed by an authorized service representative.**

**Thank you for selecting a BISSELL product.**

**Please do not return this product to the store.**

**For any questions or concerns, BISSELL is happy to be of service. Contact us directly at 1-800-237-7691.**

### Remedies

1. Adjust powerfoot to correct height setting see, page 7

### Remedies

1. Empty dirt container
2. Check pre-motor and post-motor filters for correct installation see page 10
3. Pull out and re-insert dirt container correctly, see page 9

# Replacement parts - BISSELL vacuum

Item	Part No.	Part Name
1	203-1520	Drive Belt
2	203-1512	Foot Brush Roll
3	203-1509	Pre-Motor Foam Filter
4	203-1510	Post-Motor Filter

1



2



3



4



## Additional accessories

These items are available for purchase as accessories for your BISSELL OptiClean: To purchase call 1-800-237-7691 or visit [www.bissell.com](http://www.bissell.com).

Item	Part No.	Part Name
1	203-1056	Crevice Tool
2	203-1527	Dusting Brush/Upholstery Tool
3	203-1429	TurboBrush® Tool
4	203-1068	Extension Wand
5	203-1507	Twist 'n Snap Vacuum Hose
6	203-7936	Pet TurboBrush® Tool
7	203-1291	Pet Contour Tool®

1



2



3



4



5



6



7



# Warranty - BISSELL OptiClean® Vacuum

This warranty gives you specific legal rights, and you may also have other rights which may vary from state to state. If you need additional instruction regarding this warranty or have questions regarding what it may cover, please contact BISSELL Consumer Services by E-mail, telephone, or regular mail as described below.

## Limited Three Year Warranty

Subject to the \*EXCEPTIONS AND EXCLUSIONS identified below, upon receipt of the product BISSELL Homecare, Inc. will repair or replace (with new or remanufactured components or products), at BISSELL's option, free of charge from the date of purchase by the original purchaser, for three years any defective or malfunctioning part.

See information below on "If your BISSELL product should require service".

This warranty applies to product used for personal, and not commercial or rental service. This warranty does not apply to fans or routine maintenance components such as filters, belts, or brushes. Damage or malfunction caused by negligence, abuse, neglect, unauthorized repair, or any other use not in accordance with the User's Guide is not covered.

## If your BISSELL product should require service:

Contact BISSELL Consumer Services to locate a BISSELL Authorized Service Center in your area.

If you need information about repairs or replacement parts, or if you have questions about your warranty, contact BISSELL Consumer Services.

### Website or E-mail:

[www.bissell.com](http://www.bissell.com)

Use the "Customer Support" tab.

### Or Call:

BISSELL Consumer Services

1-800-237-7691

Monday - Friday 8 a.m. - 10 p.m. ET

Saturday 9 a.m. - 8 p.m. ET

### Or Write:

BISSELL Homecare, Inc.

PO Box 3606

Grand Rapids, MI 49501

ATTN: Consumer Services

BISSELL HOMECARE, INC. IS NOT LIABLE FOR INCIDENTAL OR CONSEQUENTIAL DAMAGES OF ANY NATURE ASSOCIATED WITH THE USE OF THIS PRODUCT. BISSELL'S LIABILITY WILL NOT EXCEED THE PURCHASE PRICE OF THE PRODUCT.

**Some states do not allow the exclusion or limitation of incidental or consequential damages, so the above limitation or exclusion may not apply to you.**

### \*EXCEPTIONS AND EXCLUSIONS FROM THE TERMS OF THE LIMITED WARRANTY

THIS WARRANTY IS EXCLUSIVE AND IN LIEU OF ANY OTHER WARRANTIES EITHER ORAL OR WRITTEN. ANY IMPLIED WARRANTIES WHICH MAY ARISE BY OPERATION OF LAW, INCLUDING THE IMPLIED WARRANTIES OF MERCHANTABILITY AND FITNESS FOR A PARTICULAR PURPOSE, ARE LIMITED TO THE THREE YEAR DURATION FROM THE DATE OF PURCHASE AS DESCRIBED ABOVE.

Some states do not allow limitations on how long an implied warranty last so the above limitation may not apply to you.



## Don't forget to register your product!

Registering is quick, easy and offers you benefits over the lifetime of your product. You'll receive:

### **BISSELL Rewards Points**

Automatically earn points for discounts and free shipping on future purchases.

### **Faster Service**

Supplying your information now saves you time should you need to contact us with questions regarding your product.

### **Product Support Reminders and Alerts**

We'll contact you with any important product maintenance reminders and alerts.

### **Special Promotions**

Optional: Register your email to receive notice of offers, contests, cleaning tips and more!

**Visit [www.bissell.com/registration](http://www.bissell.com/registration) now!**



## BISSELL consumer services

For information about repairs or replacement parts, or questions about your warranty, call:

### **BISSELL Consumer Services**

**1-800-237-7691**

Monday - Friday 8 a.m. — 10 p.m. ET

Saturday 9 a.m. — 8 p.m. ET

Or write:

BISSELL Homecare, Inc.

PO Box 3606

Grand Rapids MI 49501

ATTN: Consumer Services

Or visit the BISSELL website - **[www.bissell.com](http://www.bissell.com)**

When contacting BISSELL, have model number of cleaner available.

Please record your Model Number: \_\_\_\_\_

Please record your Purchase Date: \_\_\_\_\_

**NOTE: Please keep your original sales receipt. It provides proof of purchase date in the event of a warranty claim. See Warranty on page 19 for details.**



©2011 BISSELL Homecare, Inc.  
Grand Rapids, Michigan  
All rights reserved. Printed in China  
Part Number 110-4384  
Rev 11/11  
Visit our website at:  
[www.bissell.com](http://www.bissell.com)

